

Election of Women ASA Fellows 1914-2005

This document describes the gender distribution of ASA fellows since 1914. Data concerning exact number of fellows within each gender from the years 1914-1990 are not readily available. Hence, the gender distribution of women fellows is estimated by counting the number of ASA fellows listed on the ASA web site and assigning gender to each fellow based on their name. This procedure enables estimation of the gender distribution of the ASA fellows but not the ASA nominations. The counts by gender are estimated by guessing the names; therefore, the numbers are not exact. However, the estimate of the proportion who are women each year can be considered as reasonable.

Exact gender of nominated and elected ASA fellows is available for 1991-2005 from the ASA office. The percent of elected ASA fellows who were women for each year from 1914-2005 is given in Table 1.

To summarize the data, observations were collapsed into ten year intervals (except for 1914-19 and 2000-05). These data are tabulated in Table 2, and graphed in Figure 1. Figure 1 illustrates the percent of elected ASA fellows who are women for every decade since 1914.

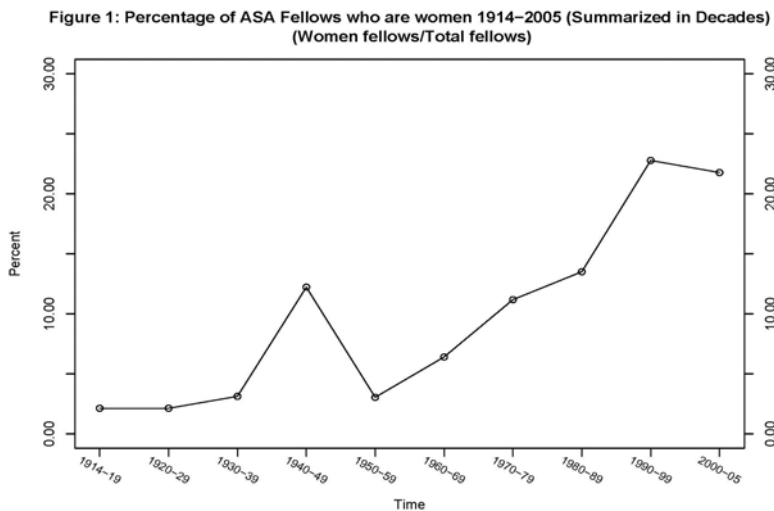


Figure 1 shows that the percentage of elected ASA fellows who are women has been increasing steadily over the years. However, this increasing trend may mimic the shift in gender distribution towards more women in the ASA membership. Data on gender of ASA members have only recently become

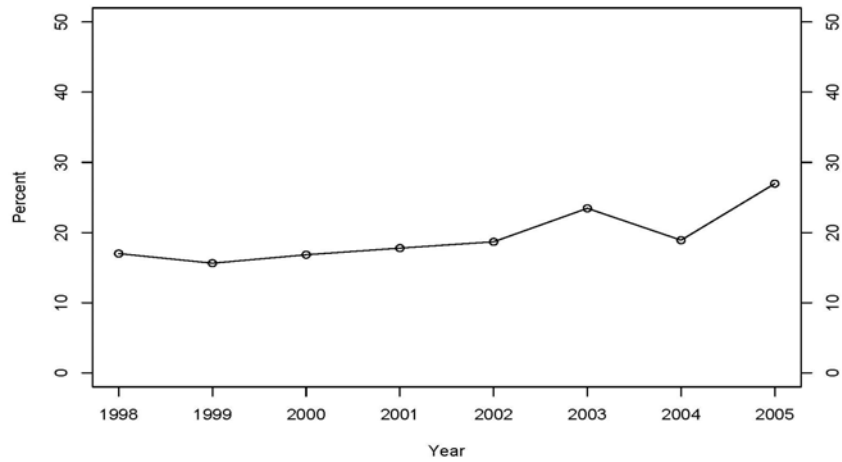
available. The 2005 Report to COWIS on ASA Membership Statistics presented data on gender distribution by decade of birth among current ASA members. The last column of Table 2 shows the percent who are women in the sub-cohort of current members who turned 40 during a given decade. The age cohort turning 40 was chosen for comparison as age 40 may be a reasonable starting point for eligibility to be nominated to be an ASA fellow. It is seen that these percentages match the percentage of women among fellows fairly closely. However, these are not necessarily the percentages of ASA members who were women at that time. The circumstances that influence women and men to remain members may be similar to those that lead them to being elected fellows.

Cumulative percentages: ASA does not have data on the percentage of women among all present members who are fellows. An estimate was obtained by accumulating estimated numbers of fellows who are active members across years in Table 1. For years 1972-2005, fellows indicated at the ASA web listing as no longer being members were subtracted from the years' counts. Best guesses were necessary for a few names. For years 1949-1971 fellows who are still members were counted and classified into gender by name. There were no fellows elected prior to 1949 who are still members. Based on this method it is estimated that of fellows ever elected who are ASA members as of September 2005, 18% are women.

To obtain some information on what percentage of women there are among ASA members in the age range of potential eligibility to be elected as fellows, data were extracted from the 2005 Report to COWIS on ASA Membership Statistics. Since these statistics were grouped by decade of birth, and the current year is 2005, it was necessary to use cut points ending in 5, rather than the age 40 criterion used above for fellow eligibility. It was found that 18% of ASA members above age 45 are women, while 28% above age 35 are women. Hence the percentage women among fellows is the same as the percentage of women among members age 45 and above.

Nomination and Selection during recent years: Data from the ASA fellow nomination process is available for the years 1998-2005. The following Figure 2 shows the percentage of women considered by the Committee on Fellows (percentage of nominations who were women = Women nominated /total No. nominated) for each year since 1998.

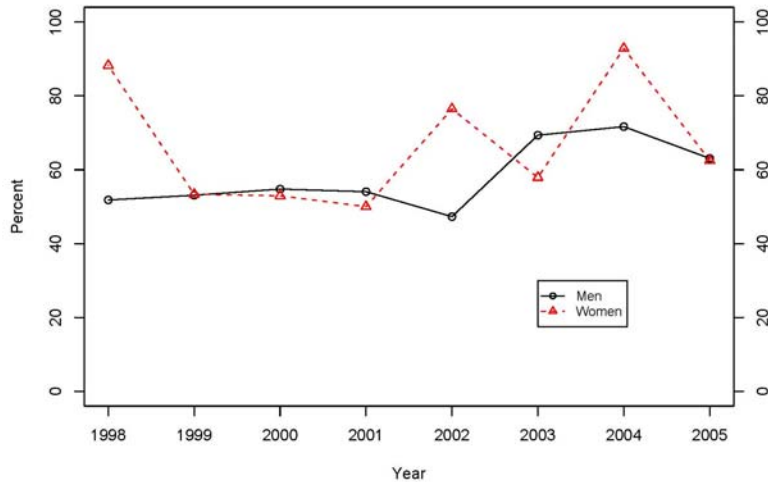
Figure 2: Percentage of Women Nominees for ASA Fellow 1998–2005



It appears that the percentage of nominations who are women has been stable with a possible rise in the last few years, except 2004. The approximate average percentage of nominations who are women is 19%. The percentage of nominations who were women is tabulated in Table 3.

Below in Figure 3, we also present the probability of being selected as an ASA fellow for men and women nominated. The success rate is defined as the number of selected divided by the number nominated for each gender.

Figure 3: Probabilities of Getting Selected After being Nominated for Men and Women 1998–2004



The success rate for women is higher than that for men in some instances, but they are not very different. The success rates among men and women nominated from 1998 to 2005 are given in Table 4.

Summary: Over the years there has been a favorable trend showing a steady increase in the percentage of women among ASA fellow selections. Since the effort of tabulating and promoting women to be nominated began, the percent women among fellows elected has doubled. Whether this trend is real or simply reflects the trend of more women joining the ASA membership is not clear, as the gender distribution of ASA members is available only for the present. The percentage of women elected fellow in each decade since 1960 parallels the percentage of women among present ASA members who turned 40 during that decade. However, it is not clear what factors influence men or women to remain members.

In recent years the percentage of women nominees to be ASA fellows has been considered to be stable at approximately 19%. A possible rise in 2005 may be noted, where the percent women at 27% came close to the percentage women in the ASA membership. Once nominated, the data from recent years indicate that the success rate for both men and women is around 50%, and slightly higher for women in some instances. For example, the success rate among women was very high in 2004 when fewer women were nominated. While the success rates for men and women are similar it is unclear to what extent women have yet “caught up” relative to their membership and seniority in ASA. It may be noted that the percentage of women among current members age 45 and above is the same as the percentage of women among all ASA fellows who are currently members. However, age above 45 is a very rough indicator of eligibility.

Prepared by: Mari Palta, University of Wisconsin, updating previous report by Amita Manatunga, Emory University, who in turn based her report on data reported by Dan Kasprzyk.

Table 1 :ASA Fellows
Original data set (1914-2004)

| Year | Total # of Fellows | Men | Women | Percent Women among Fellows |
|-------------|-------------------------------|------------|--------------|--|
| 2005 | 56 | 41 | 15 | 27 |
| 2004 | 56 | 43 | 13 | 23 |
| 2003 | 54 | 43 | 11 | 20 |
| 2002 | 48 | 35 | 13 | 27 |
| 2001 | 48 | 40 | 8 | 17 |
| 2000 | 55 | 46 | 9 | 16 |
| 1999 | 51 | 43 | 8 | 16 |
| 1998 | 58 | 43 | 15 | 26 |
| 1997 | 56 | 46 | 10 | 18 |
| 1996 | 61 | 48 | 13 | 21 |
| 1995 | 48 | 36 | 12 | 25 |
| 1994 | 49 | 32 | 17 | 35 |
| 1993 | 38 | 30 | 8 | 21 |
| 1992 | 37 | 29 | 8 | 22 |
| 1991 | 31 | 24 | 7 | 23 |
| 1990 | 32 | 25 | 7 | 22 |
| 1989 | 28 | 22 | 6 | 21 |
| 1988 | 32 | 29 | 3 | 9.4 |
| 1987 | 31 | 28 | 3 | 9.7 |

| Year | Total # of Fellows | Men | Women | Percent Women among Fellows |
|-------------|-------------------------------|------------|--------------|--|
| 1986 | 19 | 19 | 0 | 0.0 |
| 1985 | 19 | 15 | 4 | 21 |
| 1984 | 25 | 22 | 3 | 12 |
| 1983 | 36 | 30 | 6 | 17 |
| 1982 | 29 | 25 | 4 | 14 |
| 1981 | 36 | 31 | 5 | 14 |
| 1980 | 19 | 16 | 3 | 16 |
| 1979 | 30 | 26 | 4 | 13 |
| 1978 | 18 | 16 | 2 | 11 |
| 1977 | 22 | 19 | 3 | 14 |
| 1976 | 27 | 24 | 3 | 11 |
| 1975 | 26 | 24 | 2 | 7.7 |
| 1974 | 35 | 27 | 8 | 23 |
| 1973 | 36 | 34 | 2 | 5.6 |
| 1972 | 42 | 37 | 5 | 12 |
| 1971 | 35 | 33 | 2 | 5.7 |
| 1970 | 42 | 38 | 4 | 9.5 |
| 1969 | 35 | 32 | 3 | 8.6 |
| 1968 | 35 | 33 | 2 | 5.7 |
| 1967 | 33 | 31 | 2 | 6.1 |
| 1966 | 32 | 29 | 3 | 9.4 |
| 1965 | 40 | 39 | 1 | 2.5 |

| Year | Total # of Fellows | Men | Women | Percent Women among Fellows |
|-------------|-------------------------------|------------|--------------|--|
| 1964 | 34 | 31 | 3 | 8.8 |
| 1963 | 39 | 39 | 0 | 0.0 |
| 1962 | 28 | 26 | 2 | 7.1 |
| 1961 | 29 | 26 | 3 | 10 |
| 1960 | 23 | 21 | 2 | 8.7 |
| 1959 | 21 | 21 | 0 | 0.0 |
| 1958 | 21 | 20 | 1 | 4.8 |
| 1957 | 18 | 18 | 0 | 0.0 |
| 1956 | 17 | 17 | 0 | 0.0 |
| 1955 | 18 | 18 | 0 | 0.0 |
| 1954 | 12 | 11 | 1 | 8.3 |
| 1953 | 27 | 25 | 2 | 7.4 |
| 1952 | 28 | 28 | 0 | 0.0 |
| 1951 | 20 | 18 | 2 | 10.0 |
| 1950 | 15 | 15 | 0 | 0.0 |
| 1949 | 19 | 16 | 3 | 16 |
| 1948 | 4 | 4 | 0 | 0.0 |
| 1947 | 6 | 6 | 0 | 0.0 |
| 1946 | 9 | 7 | 2 | 22 |
| 1945 | 11 | 9 | 2 | 18 |
| 1944 | 10 | 8 | 2 | 20 |
| 1943 | 10 | 10 | 0 | 0.0 |

| Year | Total # of Fellows | Men | Women | Percent Women among Fellows |
|-------------|-------------------------------|------------|--------------|--|
| 1942 | 10 | 9 | 1 | 10 |
| 1941 | 6 | 6 | 0 | 0.0 |
| 1940 | 5 | 4 | 1 | 20 |
| 1939 | 10 | 9 | 1 | 10 |
| 1938 | 0 | 0 | 0 | . |
| 1937 | 6 | 6 | 0 | 0.0 |
| 1936 | 3 | 3 | 0 | 0.0 |
| 1935 | 3 | 3 | 0 | 0.0 |
| 1934 | 2 | 2 | 0 | 0.0 |
| 1933 | 2 | 2 | 0 | 0.0 |
| 1932 | 1 | 1 | 0 | 0.0 |
| 1931 | 3 | 3 | 0 | 0.0 |
| 1930 | 2 | 2 | 0 | 0.0 |
| 1929 | 0 | 0 | 0 | . |
| 1928 | 2 | 2 | 0 | 0.0 |
| 1927 | 3 | 3 | 0 | 0.0 |
| 1926 | 2 | 2 | 0 | 0.0 |
| 1925 | 0 | 0 | 0 | . |
| 1924 | 2 | 2 | 0 | 0.0 |
| 1923 | 5 | 5 | 0 | 0.0 |
| 1922 | 16 | 16 | 0 | 0.0 |
| 1921 | 11 | 10 | 1 | 9.1 |

| Year | Total # of Fellows | Men | Women | Percent Women among Fellows |
|-------------|-------------------------------|------------|--------------|--|
| 1920 | 6 | 6 | 0 | 0.0 |
| 1919 | 4 | 3 | 1 | 25 |
| 1918 | 0 | 0 | 0 | . |
| 1917 | 9 | 9 | 0 | 0.0 |
| 1916 | 11 | 11 | 0 | 0.0 |
| 1915 | 0 | 0 | 0 | . |
| 1914 | 23 | 23 | 0 | 0.0 |

**Table 2: ASA Fellows
1914-2005 (Summarized in Decades)**

| time | Total # of Fellows | Men | Women | Percent Women among Fellows | Percent women In cohort turning 40 years old |
|-------------|-----------------------------------|------------|--------------|--|---|
| 2000-05 | 350 | 272 | 78 | 22 | 28 |
| 1990-99 | 461 | 353 | 108 | 23 | 18 |
| 1980-89 | 274 | 237 | 37 | 14 | 13 |
| 1970-79 | 313 | 278 | 35 | 11 | 11 |
| 1960-69 | 292 | 307 | 21 | 7.2 | 11 |
| 1950-59 | 197 | 191 | 6 | 3.1 | |
| 1940-49 | 90 | 79 | 11 | 12 | |
| 1930-39 | 32 | 31 | 1 | 3.1 | |
| 1920-29 | 47 | 46 | 1 | 2.1 | |
| 1914-19 | 47 | 46 | 1 | 2.1 | |

**Table 3: Percent women among those nominated for ASA Fellows
1998-2005**

| year | Total # Nominated | Nominated Men | Nominated Women | Percent Women among Nominations |
|------|----------------------|------------------|--------------------|---------------------------------------|
| 2005 | 89 | 65 | 24 | 27 |
| 2004 | 74 | 60 | 14 | 19 |
| 2003 | 81 | 62 | 19 | 23 |
| 2002 | 91 | 74 | 17 | 19 |
| 2001 | 90 | 74 | 16 | 18 |
| 2000 | 101 | 84 | 17 | 17 |
| 1999 | 96 | 81 | 15 | 16 |
| 1998 | 100 | 83 | 17 | 17 |

Total nominated women = 139, total nominated =722; Approximate average percentage of nominations who are women is 19%

**Table 4: Percent success of men and women among those nominated for ASA Fellows
1998-2005**

| year | Nominated Men | Nominated Women | Selected Men | Selected Women | Percent Success for Men | Percent Success for Women |
|-------------|----------------------|------------------------|---------------------|-----------------------|--------------------------------|----------------------------------|
| 2005 | 65 | 24 | 41 | 15 | 63 | 63 |
| 2004 | 60 | 14 | 43 | 13 | 72 | 93 |
| 2003 | 62 | 19 | 43 | 11 | 69 | 58 |
| 2002 | 74 | 17 | 35 | 13 | 47 | 76 |
| 2001 | 74 | 16 | 40 | 8 | 54 | 50 |
| 2000 | 84 | 17 | 46 | 9 | 55 | 53 |
| 1999 | 81 | 15 | 43 | 8 | 53 | 53 |
| 1998 | 83 | 17 | 43 | 15 | 52 | 88 |