



NSF Funding Opportunities: Statistics, Mathematics, and Data Science

July 28, 2019

Huixia Judy Wang
Program Officer Division of
Mathematical Sciences
National Science Foundation

NSF ORGANIZATIONAL CHART

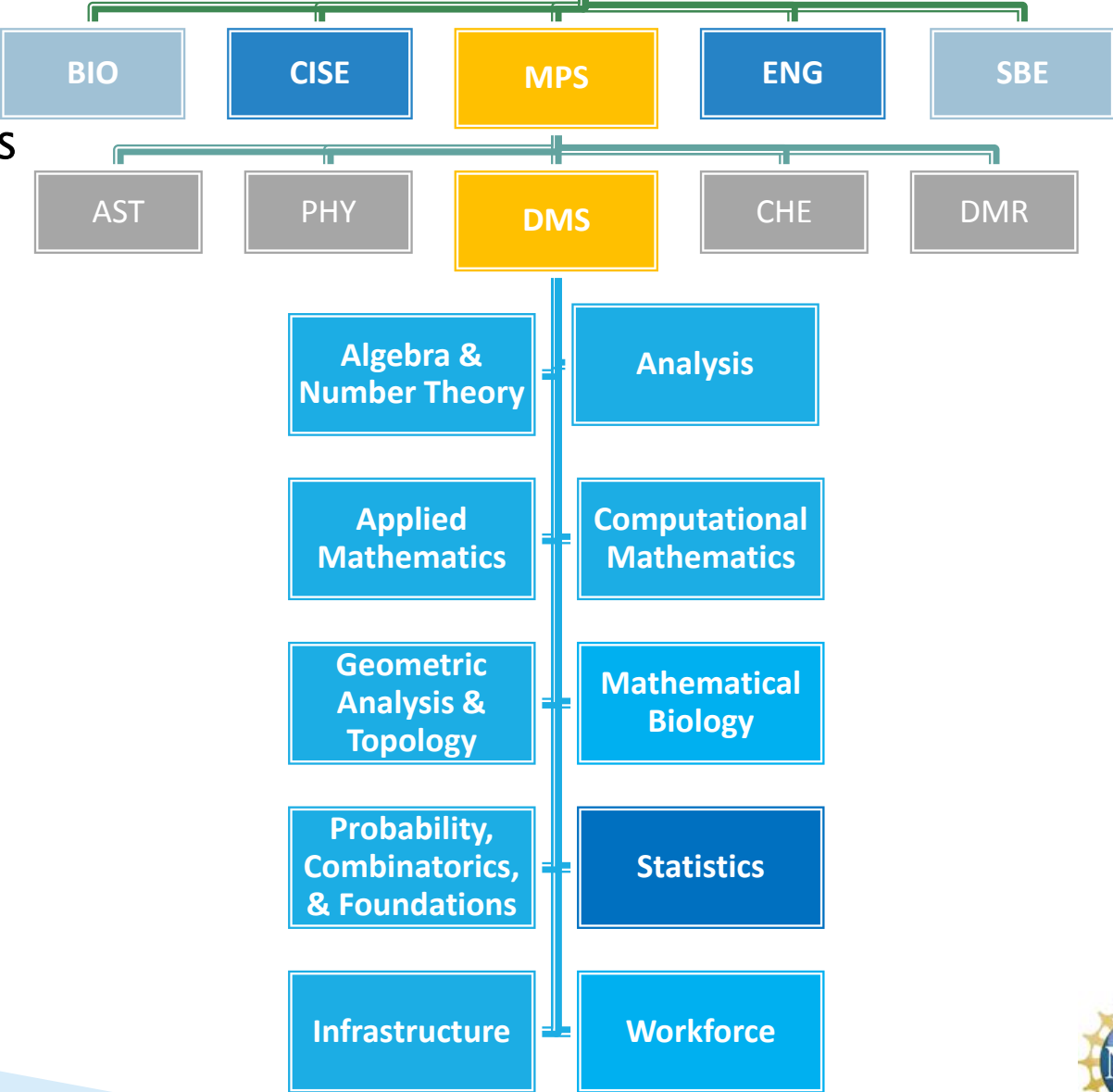
DIRECTORATE

MPS-MATHEMATICAL AND PHYSICAL SCIENCES

DIVISION

DMS-DIVISION OF MATHEMATICAL SCIENCES

PROGRAM



Research Programs 1

▶ Faculty Early Career Development Program (CAREER)

- Deadline: July 19, 2019
- https://www.nsf.gov/funding/pgm_summ.jsp?pi_ms_id=503214

▶ Regular Statistics Program

- Submission window: Dec 1–16, 2019
- https://www.nsf.gov/funding/pgm_summ.jsp?pi_ms_id=5556&org=DMS&from=home



- ▶ **DMS/NIGMS** (Interface of the Biological and Mathematical Sciences)
 - Solicitation: www.nsf.gov/pubs/2018/nsf18566/nsf18566.pdf
 - September 1–18, 2019
- ▶ **CDS&E–MSS** (computational and massive-data challenges presented to scientific and engineering communities)
 - https://www.nsf.gov/funding/pgm_summ.jsp?pims_id=504687
 - September 1–16, 2019
- ▶ **ATD** (Algorithms for Threat Detection)
 - <https://www.nsf.gov/pubs/2019/nsf19504/nsf19504.htm>
 - February 19, 2019
- ▶ **DMS/NLM** (Generalizable Data Science Methods for Biomedical Research)
 - <https://www.nsf.gov/pubs/2019/nsf19500/nsf19500.htm>
 - Feb 14, 2019
- ▶ **More: AMPS, FRGMS, TRIPODS, CRCNS**
<https://www.nsf.gov/funding/programs.jsp?org=DMS>



Training & Career Development

▶ **G RTP** (Graduate Research Fellowship Program)

- <https://www.nsf.gov/pubs/2018/nsf18573/nsf18573.pdf>
- October 25, 2019

▶ **MSPRF** (Mathematical Sciences Postdoctoral Research Fellowships)

- <https://www.nsf.gov/pubs/2016/nsf16558/nsf16558.pdf>
- October 31, 2019

▶ **MSGI** (NSF Mathematical Sciences Graduate Internship)

- For math science doctoral students to participate in internships at federal national laboratories, industry and other approved facilities
- <https://orise.orau.gov/nsf-msgi>
- January 31

▶ **Others:** RTG (Research Training Groups in the Mathematical Sciences); REU (Research Experiences for Undergraduates) Sites



Infrastructure

- ▶ **Conference, Workshops, and Special Meetings**
 - Submit to the appropriate DMS programs
- ▶ **CBMS: Regional Conferences of the Conference Board of the Mathematical Sciences**
 - five-day conferences that usually feature a distinguished lecturer delivering ten lectures on a topic of important current research in one sharply focused area of the mathematical sciences
 - **April 24, 2020**
- ▶ **Mathematical Sciences Infrastructure Program**
 - Working research sessions; conferences, symposia; training projects
 - **Dec 15**

Ask the conferences organizers whether financial support is available – this could supplement departmental or other support



QUESTIONS?

Huixia Judy Wang

Email: huiwang@nsf.gov

Tel: (703) 292 2279

National Science Foundation

